

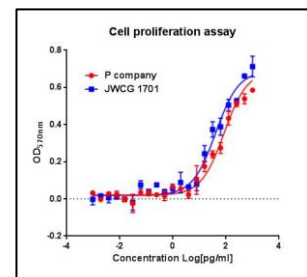
## DATA SHEET

### Product Information

<b>Product Name</b>	: <b>Recombinant Mouse Interleukin-1 Beta (rmIL-1<math>\beta</math>)</b>
<b>Synonyms</b>	: IL-1 beta, Catabolin, <i>IL1B</i>
<b>Description</b>	: Interleukin-1 beta (IL-1 $\beta$ ) known as catabolin, is a cytokine protein that in humans is encoded by the <i>IL1B</i> gene. IL-1 $\beta$ precursor is cleaved by cytosolic caspase 1 (interleukin 1 beta convertase) to form mature IL-1 $\beta$ . Interleukin 1 was discovered by Igal Gery in 1972. He named it lymphocyte-activating factor (LAF) because it was a lymphocyte mitogen. It was not until 1985 that interleukin 1 was discovered to consist of two distinct proteins, now called interleukin-1 alpha and interleukin-1 beta. IL-1 $\beta$ is an important mediator of the inflammatory response, and is involved in a variety of cellular activities, including cell proliferation, differentiation, and apoptosis. (Ref. From Wikipedia)
<b>NCBI Accession No.</b>	: NM_008361.4
<b>Amino acid sequence</b>	: MVP <del>IRQLHYRLRDEQQKSLVLSDPYELKALHLNGQININQQVIFSMSFVQGEPSNDKIPVALGLKGNLYLSCVMKDGTP<del>TLQLESVDPKQYPKKKMEKRFVFNKIEVKS</del>KVEFESAEFPNWYISTSQAEHKPVFLGNNSGQDIIDFTMESVSS*</del>
<b>Molecular Mass</b>	: 17.52 kDa (153 aa)
<b>Protein Tags</b>	: No tagging
<b>Source</b>	: <i>E. coli</i> .
<b>Cat. No.</b>	: JW-M007-0010, JW-M007-0025, JW-M007-0100, JW-M007-0250, JW-M007-0500, JW-M007-1000
<b>Storage</b>	: Should be at $\leq -70$ °C as undiluted aliquots of handy size. Avoid repeated freezing and thawing.
<b>Cross Reactivity</b>	: Human, Monkey, Rat, Pig, Chicken

### Quality Control

Test items	Specifications
<b>Appearance</b>	: Clear, colorless liquid
<b>Purity</b>	: Greater than 98 % by RP-HPLC and SDS-PAGE
<b>Specificity</b>	: Using Western blot, detection
<b>Concentration</b>	: 0.1 mg/ml, Bradford method
<b>Biological Activity</b>	: Determined by proliferation of D10.G4.1 indicator cells The ED50 is < 10 pg/ml, corresponding to a specific activity of > 1.0 $\times 10^8$ EU/mg
<b>Endotoxin</b>	: Less than 1.0 EU/ $\mu$ g as determined by the LAL method
<b>Formulation</b>	: 1X PBS, 5% glycerol (pH 7.4) without preservative or carrier proteins.
<b>Stability</b>	: Stable for up to 12 months at -70 °C. Stable for a month at 4 °C.
<b>Sterility</b>	: Sterilized through a 0.2 $\mu$ m membrane filter and packaged aseptically. Culture for 2 weeks, no growth



**Manufacturer** : **JW CreaGene Inc.**  
 FL2, Jungang induspia V, 138-6, Sangdaewon-dong, Jungwon-gu, Seongnam-si,  
 Gyeonggi-do, South Korea (462-120)  
 Tel: 82-31-737-3310, Fax: 82-31-737-3301